



Winnie the witch - part one



Match



.



.



.



.



.

.

chair

.

bath

.

house

.

cat

.

bed

Find the words



W R F O E H H F T T

U I O L X O T J A C

Z Y T O N U A C H P

B E D C D S B A K M

W Y K L H E I B E O

V P W V H R S I C R

C Q Z V S Z T I Y F

F O O R S Y A Q Q U

R E P I R Y C P L N

C W C F C A R P E T





Winnie the witch - part two



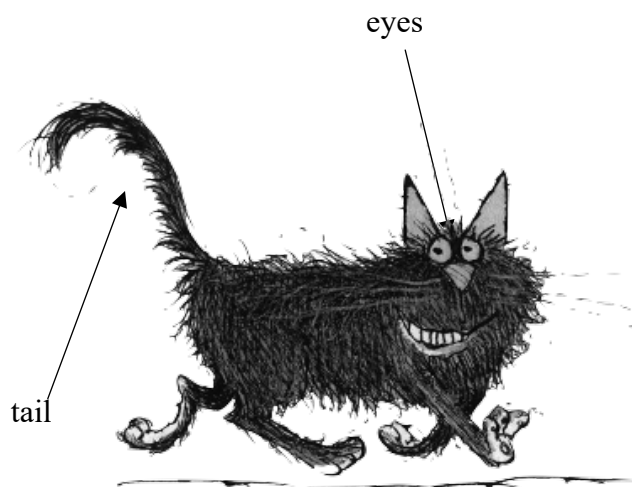
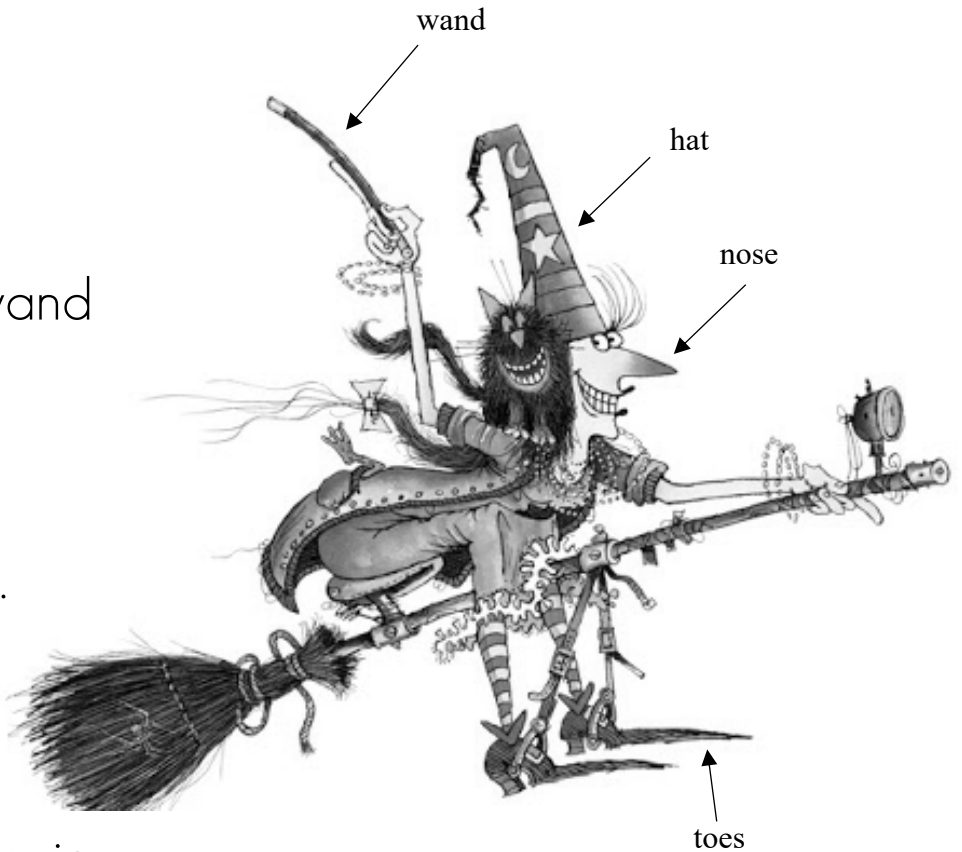
Listen and sing

A big tall hat
Ten long toes
A black magic wand
A long red nose.

She's Winnie
Winnie the witch.

A long black tail
Big green eyes
He goes with Winnie
When she flies.

He's Wilbur
Wilbur the cat.





Winnie the witch - part three



Imagine

Wilbur est malheureux...

D'après toi, que va-t-il se passer ? Comment va se finir l'histoire ?

.....

.....

.....

.....

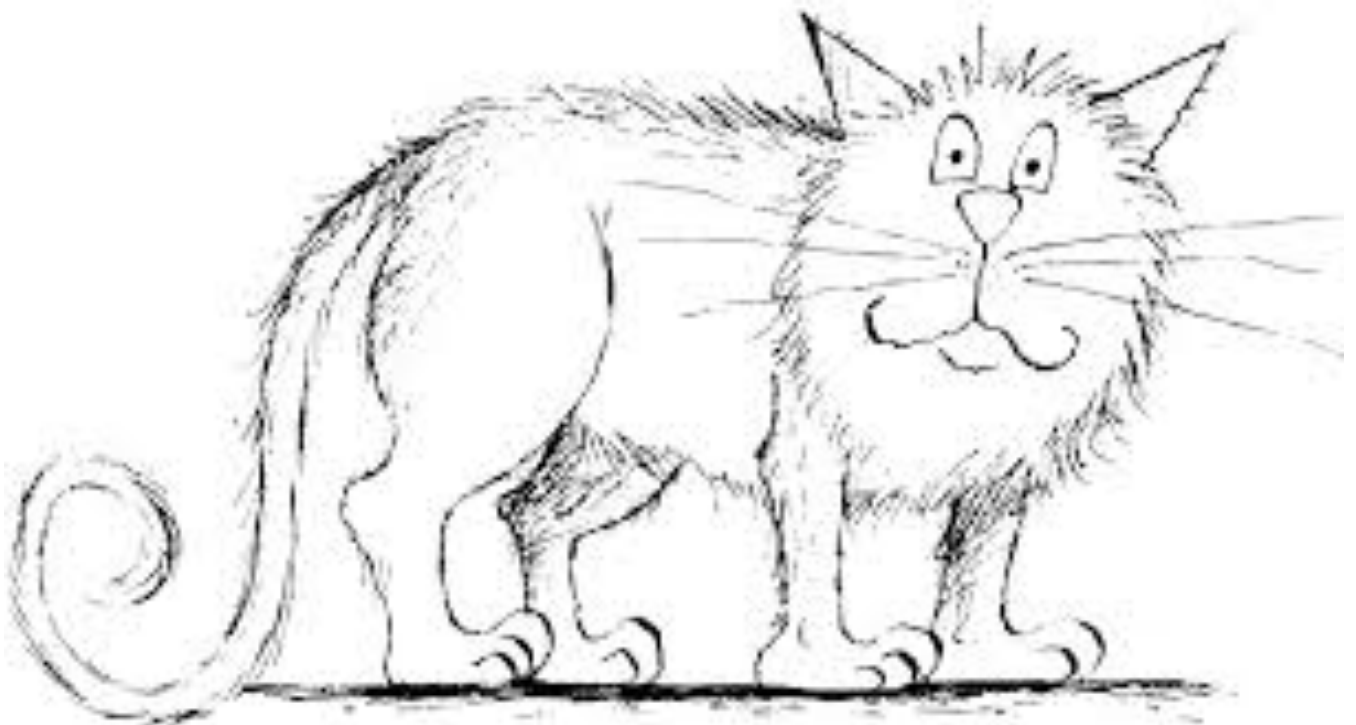
.....

.....



Color

Wilbur's eyes are green – Wilbur's whiskers are blue – Wilbur's head is red –
Wilbur's legs are purple - Wilbur's body is yellow – Wilbur's tail is pink









Winnie the witch - part four



Read and match.

Hat – blue – black – toes – tail – legs – bath – chair – shoes – yellow - dress – eyes – roof – head – carpet – pink - purple

House 	Clothes 	Colors 	Body 

Read and color

The cupboards are green and purple.

The witches are red and yellow.

The cats have got black body, purple legs and green eyes.

The chairs are blue and pink.

The baths are black.

